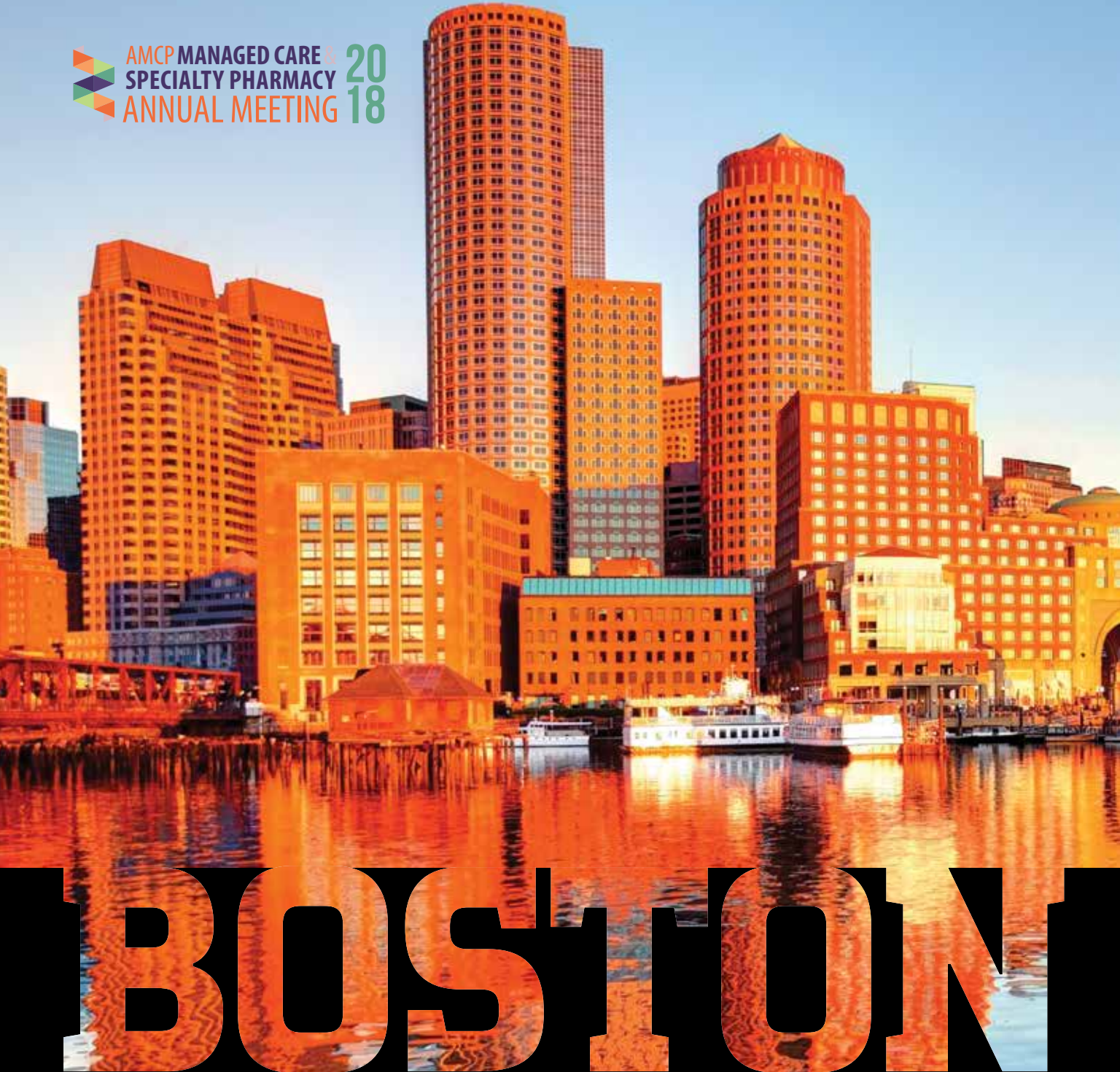


April 23-26, 2018 Boston, Massachusetts

# CITYGUIDE

 **AMCP MANAGED CARE & SPECIALTY PHARMACY**  
**ANNUAL MEETING 2018**



**AMC**  
AMERICAN MEDICAL  
COMMUNICATIONS

Your guide to the sights, must-see attractions, and things to do during your stay.

**NOW APPROVED**

FASENRA is indicated as an add-on maintenance treatment of patients 12 years or older with severe eosinophilic asthma.

# POWER TO PREVENT EXACERBATIONS

**WITH BETTER BREATHING AFTER THE FIRST DOSE**<sup>\*1-4</sup>

FASENRA is proven to reduce annual exacerbation rate and improve lung function in patients with severe eosinophilic asthma. Improvements in lung function were observed as early as Week 4.<sup>\*1-4</sup>



**FASENRA is not indicated for treatment of other eosinophilic conditions or for the relief of acute bronchospasm or status asthmaticus.**

<sup>\*</sup>Statistical significance for FEV<sub>1</sub> improvement was established at end of treatment. Week 4 results were descriptive only. FASENRA demonstrated greater improvements in change from baseline in pre-bronchodilator FEV<sub>1</sub> compared with placebo at Week 4 (first measured time point after administration of treatment dose) that were maintained through end of treatment.<sup>2-4</sup>

<sup>†</sup>The pharmacodynamic response (blood eosinophil depletion) following repeat SC dosing was evaluated in asthma patients in a 12-week phase 2 trial. Patients received 1 of 3 doses of benralizumab [25 mg (n=6), 100 mg (n=6) or 200 mg (n=6) SC] or placebo (n=6) every 4 weeks for a total of 3 doses. Twenty-four hours post dosing, all benralizumab dosage groups demonstrated complete or near complete depletion of blood eosinophil levels, which was maintained throughout the dosing period.<sup>1,5</sup>

The relationship between the pharmacologic properties and clinical efficacy has not been established.

## IMPORTANT SAFETY INFORMATION

### CONTRAINDICATIONS

Known hypersensitivity to benralizumab or excipients.

### WARNINGS AND PRECAUTIONS

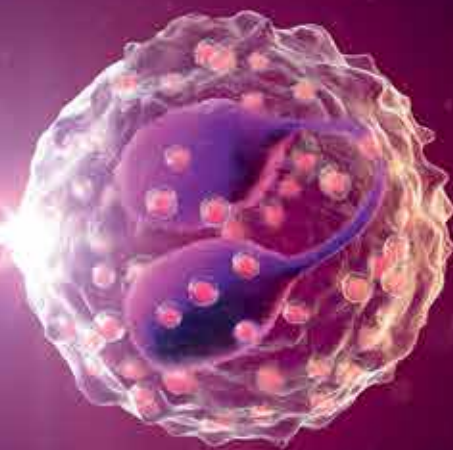
#### Hypersensitivity Reactions

Hypersensitivity reactions (eg, anaphylaxis, angioedema, urticaria, rash) have occurred after administration of FASENRA. These reactions generally occur within hours of administration, but in some instances have a delayed onset (ie, days). Discontinue in the event of a hypersensitivity reaction.

#### Acute Asthma Symptoms or Deteriorating Disease

FASENRA should not be used to treat acute asthma symptoms, acute exacerbations, or acute bronchospasm.

- **FASENRA is the first and only biologic that provides near complete depletion of blood eosinophils in 24 hours<sup>+1,5</sup>**
- The mechanism of action of benralizumab in asthma has not been definitively established
  - The relationship between the pharmacologic properties and clinical efficacy has not been established.
- **FASENRA is the first and only biologic for severe asthma with a prefilled syringe and Q8W maintenance dosing schedule<sup>1</sup>**
- **The most common adverse reactions (incidence greater than or equal to 5%) include headache and pharyngitis<sup>1</sup>**



**GET STARTED AT  
FASENRAHCP.COM**

## **IMPORTANT SAFETY INFORMATION (cont'd)**

### **Reduction of Corticosteroid Dosage**

Do not discontinue systemic or inhaled corticosteroids abruptly upon initiation of therapy with FASENRA. Reductions in corticosteroid dose, if appropriate, should be gradual and performed under the direct supervision of a physician. Reduction in corticosteroid dose may be associated with systemic withdrawal symptoms and/or unmask conditions previously suppressed by systemic corticosteroid therapy.

### **Parasitic (Helminth) Infection**

It is unknown if FASENRA will influence a patient's response against helminth infections. Treat patients with pre-existing helminth infections before initiating therapy with FASENRA. If patients become infected while receiving FASENRA and do not respond to anti-helminth treatment, discontinue FASENRA until infection resolves.

**Please see additional Important Safety Information on next page and accompanying Brief Summary of full Prescribing Information.**

 **Fasenra**<sup>™</sup>  
(benralizumab) Subcutaneous  
Injection 30 mg  
**FROM THE START**



# STUDY DESIGNS

## TRIALS 1 AND 2

Trial 1 (48-week) and Trial 2 (56-week) were 2 randomized, double-blind, parallel-group, placebo-controlled, multicenter studies comparing **FASENRA** 30 mg SC Q4W for the first 3 doses, then Q8W thereafter; benralizumab 30 mg SC Q4W, and placebo SC. A total of 1204 (Trial 1) and 1306 (Trial 2) patients aged 12-75 years old with severe asthma uncontrolled on high-dose ICS (Trial 1) and medium- to high-dose ICS (Trial 2) plus LABA with or without additional controllers were included. Patients had a history of  $\geq 2$  exacerbations requiring systemic corticosteroids or temporary increase in usual dosing in the previous year. The primary endpoint was annual exacerbation rate ratio versus placebo in patients with blood eosinophil counts of  $\geq 300$  cells/ $\mu$ L on high-dose ICS and LABA. Exacerbations were defined as a worsening of asthma that led to use of systemic corticosteroids for  $\geq 3$  days, temporary increase in a stable OCS background dose for  $\geq 3$  days, emergency/urgent care visit because of asthma that needed systemic corticosteroids, or inpatient hospital stay of  $\geq 24$  hours because of asthma. Key secondary endpoints were pre-bronchodilator FEV<sub>1</sub> and total asthma symptom score at Week 48 (Trial 1) and Week 56 (Trial 2) in the same population.<sup>2,3</sup>

## TRIAL 3

A 28-week, randomized, double-blind, parallel-group, placebo-controlled, multicenter OCS reduction study comparing the efficacy and safety of **FASENRA** (30 mg SC) Q4W for the first 3 doses, then Q8W thereafter; benralizumab (30 mg SC) Q4W, and placebo (SC) Q4W. A total of 220 adult (18-75 years old) patients

with severe asthma on high-dose ICS plus LABA and chronic OCS (7.5 to 40 mg/day), blood eosinophil counts of  $\geq 150$  cells/ $\mu$ L, and a history of  $\geq 1$  exacerbation in the previous year were included. The primary endpoint was the median percent reduction from baseline in the final daily OCS dose while maintaining asthma control.<sup>6</sup>

## PHASE 2 STUDY

A 12-week, phase 2, randomized, double-blind, placebo-controlled, dose-increase study of benralizumab in adults with mild to moderate asthma. Patients were randomized to receive SC administration of benralizumab 25 mg (n=6), benralizumab 100 mg (n=6), benralizumab 200 mg (n=6), or placebo (n=6) Q4W for a total of 3 doses. One objective was to assess the effect of benralizumab on blood eosinophil counts and protein biomarkers. Median blood eosinophil levels at baseline were 400, 200, 120, and 200 cells/ $\mu$ L in the 25, 100, and 200 mg benralizumab and placebo groups, respectively.<sup>5</sup>

**References:** 1. FASENRA [package insert]. Wilmington, DE: AstraZeneca Pharmaceuticals LP; November 2017. 2. Bleecker ER, FitzGerald JM, Chaney P, et al. Efficacy and safety of benralizumab for patients with severe asthma uncontrolled with high-dosage inhaled corticosteroids and long-acting  $\beta_2$ -agonists (SIROCCO): a randomised, multicentre, placebo-controlled phase 3 trial. *Lancet*. 2016;388:2115-2127. 3. FitzGerald JM, Bleecker ER, Nair P, et al. Benralizumab, an anti-interleukin-5 receptor  $\alpha$  monoclonal antibody, as add-on treatment for patients with severe, uncontrolled, eosinophilic asthma (CALIMA): a randomised, double-blind, placebo-controlled phase 3 trial. *Lancet*. 2016;388:2128-2141. 4. Data on File, REF-19697, AZPLP. 5. Pham TH, Damera G, Newbold P, Ranade K. Reductions in eosinophil biomarkers by benralizumab in patients with asthma. *Respir Med*. 2016;111:21-29. 6. Nair P, Wenzel S, Rabe KF, et al. Oral glucocorticoid-sparing effect of benralizumab in severe asthma. *N Engl J Med*. 2017;376:2448-2458.

# IMPORTANT SAFETY INFORMATION (cont'd)

## ADVERSE REACTIONS

The most common adverse reactions (incidence  $\geq 5\%$ ) include headache and pharyngitis.

Injection site reactions (eg, pain, erythema, pruritus, papule) occurred at a rate of 2.2% in patients treated with FASENRA compared with 1.9% in patients treated with placebo.

## USE IN SPECIFIC POPULATIONS

The data on pregnancy exposure from the clinical trials are insufficient to inform on drug-associated risk. Monoclonal antibodies such as benralizumab are transported across the placenta during the third trimester of pregnancy; therefore, potential effects on a fetus are likely to be greater during the third trimester of pregnancy.

## INDICATION

FASENRA is indicated for the add-on maintenance treatment of patients with severe asthma aged 12 years and older, and with an eosinophilic phenotype.

- FASENRA is not indicated for treatment of other eosinophilic conditions
- FASENRA is not indicated for the relief of acute bronchospasm or status asthmaticus

**Please see adjacent Brief Summary of full Prescribing Information on reverse side.**

You are encouraged to report negative side effects of prescription drugs to the FDA. Visit [www.FDA.gov/medwatch](http://www.FDA.gov/medwatch) or call 1-800-FDA-1088.

FASENRA is a trademark of the AstraZeneca group of companies.



©2017 AstraZeneca. All rights reserved.  
US-16085 Last Updated 11/17

 **Fasenra**<sup>TM</sup>  
(benralizumab) Subcutaneous  
Injection 30 mg  
**FROM THE START**

## FASENRA™ (benralizumab) injection, for subcutaneous use

### Initial U.S. Approval: 2017

Brief Summary of Prescribing Information. For complete prescribing information consult official package insert.

### INDICATIONS AND USAGE

FASENRA is indicated for the add-on maintenance treatment of patients with severe asthma aged 12 years and older, and with an eosinophilic phenotype [see Clinical Studies (14) in the full Prescribing Information].

Limitations of use:

- FASENRA is not indicated for treatment of other eosinophilic conditions.
- FASENRA is not indicated for the relief of acute bronchospasm or status asthmaticus.

### DOSAGE AND ADMINISTRATION

#### Recommended Dose

FASENRA is for subcutaneous use only.

The recommended dose of FASENRA is 30 mg administered once every 4 weeks for the first 3 doses, and then once every 8 weeks thereafter by subcutaneous injection into the upper arm, thigh, or abdomen.

#### Preparation and Administration

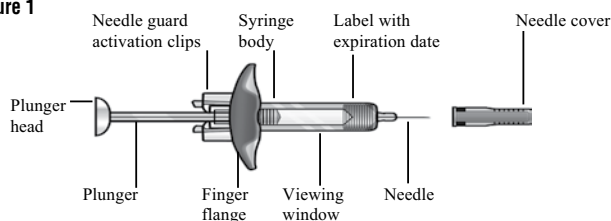
FASENRA should be administered by a healthcare professional. In line with clinical practice, monitoring of patients after administration of biologic agents is recommended [see Warnings and Precautions (5.1) in the full Prescribing Information].

Prior to administration, warm FASENRA by leaving carton at room temperature for about 30 minutes. Administer FASENRA within 24 hours or discard into sharps container.

#### Instructions for Prefilled Syringe with Needle Safety Guard

Refer to **Figure 1** to identify the prefilled syringe components for use in the administration steps.

Figure 1



**Do not touch the needle guard activation clips** to prevent premature activation of the needle safety guard.

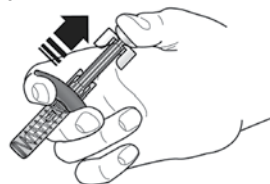
**1 Grasp the syringe body**, not the plunger, to remove prefilled syringe from the tray. Check the expiration date on the syringe. Visually inspect FASENRA for particulate matter and discoloration prior to administration. FASENRA is clear to opalescent, colorless to slightly yellow, and may contain a few translucent or white to off-white particles. Do not use FASENRA if the liquid is cloudy, discolored, or if it contains large particles or foreign particulate matter. The syringe may contain a small air bubble; this is normal. **Do not** expel the air bubble prior to administration.

**2** Do not remove needle cover until ready to inject. Hold the syringe body and remove the needle cover by pulling straight off. Do not hold the plunger or plunger head while removing the needle cover or the plunger may move. If the prefilled syringe is damaged or contaminated (for example, dropped without needle cover in place), discard and use a new prefilled syringe.

**3** Gently pinch the skin and insert the needle at the recommended injection site (i.e., upper arm, thigh, or abdomen).

**4** Inject all of the medication by pushing in the plunger all the way until the plunger head is **completely between** the needle guard activation clips. **This is necessary to activate the needle guard.**

5



After injection, maintain pressure on the plunger head and remove the needle from the skin. Release pressure on the plunger head to allow the needle guard to cover the needle. **Do not re-cap the prefilled syringe.**

6 Discard the used syringe into a sharps container.

### CONTRAINDICATIONS

FASENRA is contraindicated in patients who have known hypersensitivity to benralizumab or any of its excipients [see Warnings and Precautions (5.1) in the full Prescribing Information].

### WARNINGS AND PRECAUTIONS

#### Hypersensitivity Reactions

Hypersensitivity reactions (e.g., anaphylaxis, angioedema, urticaria, rash) have occurred following administration of FASENRA. These reactions generally occur within hours of administration, but in some instances have a delayed onset (i.e., days). In the event of a hypersensitivity reaction, FASENRA should be discontinued [see Contraindications (4) in the full Prescribing Information].

#### Acute Asthma Symptoms or Deteriorating Disease

FASENRA should not be used to treat acute asthma symptoms or acute exacerbations. Do not use FASENRA to treat acute bronchospasm or status asthmaticus. Patients should seek medical advice if their asthma remains uncontrolled or worsens after initiation of treatment with FASENRA.

#### Reduction of Corticosteroid Dosage

Do not discontinue systemic or inhaled corticosteroids abruptly upon initiation of therapy with FASENRA. Reductions in corticosteroid dose, if appropriate, should be gradual and performed under the direct supervision of a physician. Reduction in corticosteroid dose may be associated with systemic withdrawal symptoms and/or unmask conditions previously suppressed by systemic corticosteroid therapy.

#### Parasitic (Helminth) Infection

Eosinophils may be involved in the immunological response to some helminth infections. Patients with known helminth infections were excluded from participation in clinical trials. It is unknown if FASENRA will influence a patient's response against helminth infections.

Treat patients with pre-existing helminth infections before initiating therapy with FASENRA. If patients become infected while receiving treatment with FASENRA and do not respond to anti-helminth treatment, discontinue treatment with FASENRA until infection resolves.

### ADVERSE REACTIONS

The following adverse reactions are described in greater detail in other sections:

- Hypersensitivity Reactions [see Warnings and Precautions (5.1) in the full Prescribing Information]

#### Clinical Trials Experience

Because clinical trials are conducted under widely varying conditions, adverse reaction rates observed in the clinical trials of a drug cannot be directly compared to rates in the clinical trials of another drug and may not reflect the rates observed in practice.

Across Trials 1, 2, and 3, 1,808 patients received at least 1 dose of FASENRA [see Clinical Studies (14) in the full Prescribing Information]. The data described below reflect exposure to FASENRA in 1,663 patients, including 1,556 exposed for at least 24 weeks and 1,387 exposed for at least 48 weeks. The safety exposure for FASENRA is derived from two phase 3 placebo-controlled studies (Trials 1 and 2) from 48 weeks duration [FASENRA every 4 weeks (n = 841), FASENRA every 4 weeks for 3 doses, then every 8 weeks (n = 822), and placebo (n = 847)]. While a dosing regimen of FASENRA every 4 weeks was included in clinical trials, FASENRA administered every 4 weeks for 3 doses, then every 8 weeks thereafter is the recommended dose [see Dosage and Administration (2.1) in the full Prescribing Information]. The population studied was 12 to 75 years of age, of which 64% were female and 79% were white.

Adverse reactions that occurred at greater than or equal to 3% incidence are shown in Table 1.

**Table 1. Adverse Reactions with FASENRA with Greater than or Equal to 3% Incidence in Patients with Asthma (Trials 1 and 2)**

Adverse Reactions	FASENRA (N= 822) %	Placebo (N=847) %
Headache	8	6
Pyrexia	3	2
Pharyngitis*	5	3
Hypersensitivity reactions**	3	3

\* Pharyngitis was defined by the following terms: 'Pharyngitis', 'Pharyngitis bacterial', 'Viral pharyngitis', 'Pharyngitis streptococcal'.

\*\* Hypersensitivity Reactions were defined by the following terms: 'Urticaria', 'Urticaria papular', and 'Rash' [see Warnings and Precautions (5.1) in the full Prescribing Information].

### 28-Week Trial

Adverse reactions from Trial 3 with 28 weeks of treatment with FASENRA (n = 73) or placebo (n = 75) in which the incidence was more common in FASENRA than placebo include headache (8.2% compared to 5.3%, respectively) and pyrexia (2.7% compared to 1.3%, respectively) [see *Clinical Studies (14) in the full Prescribing Information*]. The frequencies for the remaining adverse reactions with FASENRA were similar to placebo.

### Injection site reactions

In Trials 1 and 2, injection site reactions (e.g., pain, erythema, pruritus, papule) occurred at a rate of 2.2% in patients treated with FASENRA compared with 1.9% in patients treated with placebo.

### Immunogenicity

As with all therapeutic proteins, there is potential for immunogenicity. The detection of antibody formation is highly dependent on the sensitivity and specificity of the assay. Additionally, the observed incidence of antibody (including neutralizing antibody) positivity in an assay may be influenced by several factors including assay methodology, sample handling, timing of sample collection, concomitant medications, and underlying disease. For these reasons, comparison of the incidence of antibodies to benralizumab in the studies described below with the incidence of antibodies in other studies or to other products may be misleading.

Overall, treatment-emergent anti-drug antibody response developed in 13% of patients treated with FASENRA at the recommended dosing regimen during the 48 to 56 week treatment period. A total of 12% of patients treated with FASENRA developed neutralizing antibodies. Anti-benralizumab antibodies were associated with increased clearance of benralizumab and increased blood eosinophil levels in patients with high anti-drug antibody titers compared to antibody negative patients. No evidence of an association of anti-drug antibodies with efficacy or safety was observed.

The data reflect the percentage of patients whose test results were positive for antibodies to benralizumab in specific assays.

### DRUG INTERACTIONS

No formal drug interaction studies have been conducted.

### USE IN SPECIFIC POPULATIONS

#### Pregnancy

##### Risk Summary

The data on pregnancy exposure from the clinical trials are insufficient to inform on drug-associated risk. Monoclonal antibodies such as benralizumab are transported across the placenta during the third trimester of pregnancy; therefore, potential effects on a fetus are likely to be greater during the third trimester of pregnancy. In a prenatal and postnatal development study conducted in cynomolgus monkeys, there was no evidence of fetal harm with IV administration of benralizumab throughout pregnancy at doses that produced exposures up to approximately 310 times the exposure at the maximum recommended human dose (MRHD) of 30 mg SC [see Data].

In the U.S. general population, the estimated background risk of major birth defects and miscarriage in clinically recognized pregnancies is 2% to 4% and 15% to 20%, respectively.

##### Clinical Considerations

##### *Disease-associated maternal and/or embryo/fetal risk:*

In women with poorly or moderately controlled asthma, evidence demonstrates that there is an increased risk of preeclampsia in the mother and prematurity, low birth weight, and small for gestational age in the neonate. The level of asthma control should be closely monitored in pregnant women and treatment adjusted as necessary to maintain optimal control.

##### Data

##### *Animal Data*

In a prenatal and postnatal development study, pregnant cynomolgus monkeys received benralizumab from beginning on GD20 to GD22 (dependent on pregnancy determination), on GD35, once every 14 days thereafter throughout the gestation period and 1-month postpartum (maximum 14 doses) at doses that produced exposures up to approximately 310 times that achieved with the MRHD (on an AUC basis with maternal IV doses up to 30 mg/kg once every 2 weeks). Benralizumab did not elicit adverse effects on fetal or neonatal growth (including immune function) up to 6.5 months after birth. There was no evidence of treatment-related external, visceral, or skeletal malformations. Benralizumab was not teratogenic in cynomolgus monkeys. Benralizumab crossed the placenta in cynomolgus monkeys. Benralizumab concentrations were approximately equal in mothers and infants on postpartum day 7, but were lower in infants at later time points. Eosinophil counts were suppressed in infant monkeys with gradual recovery by 6 months postpartum; however, recovery of eosinophil counts was not observed for one infant monkey during this period.

### Lactation

#### Risk Summary

There is no information regarding the presence of benralizumab in human or animal milk, and the effects of benralizumab on the breast fed infant and on milk production are not known. However, benralizumab is a humanized monoclonal antibody (IgG1/κ-class), and immunoglobulin G (IgG) is present in human milk in small amounts. If benralizumab is transferred into human milk, the effects of local exposure in the gastrointestinal tract and potential limited systemic exposure in the infant to benralizumab are unknown. The developmental and health benefits of breastfeeding should be considered along with the mother's clinical need for benralizumab and any potential adverse effects on the breast-fed child from benralizumab or from the underlying maternal condition.

### Pediatric Use

There were 108 adolescents aged 12 to 17 with asthma enrolled in the Phase 3 exacerbation trials (Trial 1: n=53, Trial 2: n=55). Of these, 46 received placebo, 40 received FASENRA every 4 weeks for 3 doses, followed by every 8 weeks thereafter, and 22 received FASENRA every 4 weeks. Patients were required to have a history of 2 or more asthma exacerbations requiring oral or systemic corticosteroid treatment in the past 12 months and reduced lung function at baseline (pre-bronchodilator FEV<sub>1</sub><90%) despite regular treatment with medium or high dose ICS and LABA with or without OCS or other controller therapy. The pharmacokinetics of benralizumab in adolescents 12 to 17 years of age were consistent with adults based on population pharmacokinetic analysis and the reduction in blood eosinophil counts was similar to that observed in adults following the same FASENRA treatment. The adverse event profile in adolescents was generally similar to the overall population in the Phase 3 studies [see *Adverse Reactions (6.1) in the full Prescribing Information*]. The safety and efficacy in patients younger than 12 years of age has not been established.

### Geriatric Use

Of the total number of patients in clinical trials of benralizumab, 13% (n=320) were 65 and over, while 0.4% (n=9) were 75 and over. No overall differences in safety or effectiveness were observed between these patients and younger patients, and other reported clinical experience has not identified differences in responses between the elderly and younger patients, but greater sensitivity of some older individuals cannot be ruled out.

### OVERDOSAGE

Doses up to 200 mg were administered subcutaneously in clinical trials to patients with eosinophilic disease without evidence of dose-related toxicities.

There is no specific treatment for an overdose with benralizumab. If overdose occurs, the patient should be treated supportively with appropriate monitoring as necessary.

### PATIENT COUNSELING INFORMATION

Advise the patient to read the FDA-approved patient labeling (Patient Information).

#### Hypersensitivity Reactions

Inform patients that hypersensitivity reactions (e.g., anaphylaxis, angioedema, urticaria, rash) have occurred after administration of FASENRA. These reactions generally occurred within hours of FASENRA administration, but in some instances had a delayed onset (i.e., days). Instruct patients to contact their healthcare professional if they experience symptoms of an allergic reaction [see *Warnings and Precautions (5.1) in the full Prescribing Information*].

#### Not for Acute Symptoms or Deteriorating Disease

Inform patients that FASENRA does not treat acute asthma symptoms or acute exacerbations. Inform patients to seek medical advice if their asthma remains uncontrolled or worsens after initiation of treatment with FASENRA [see *Warnings and Precautions (5.2) in the full Prescribing Information*].

#### Reduction of Corticosteroid Dosage

Inform patients to not discontinue systemic or inhaled corticosteroids except under the direct supervision of a physician. Inform patients that reduction in corticosteroid dose may be associated with systemic withdrawal symptoms and/or unmask conditions previously suppressed by systemic corticosteroid therapy [see *Warnings and Precautions (5.3) in the full Prescribing Information*].

Manufactured by  
AstraZeneca AB  
Södertälje, Sweden SE-15185  
US License No. 2059

Distributed by  
AstraZeneca Pharmaceuticals LP,  
Wilmington, DE 19850

FASENRA is a trademark of the AstraZeneca group of companies.

©AstraZeneca 2017

Iss. 11/17 US-12988 11/17

# CITYGUIDE BOSTON

## CONTENTS

- 6 Welcome to Boston
- 8 Touring Boston
- 10 Nightlife
- 12 Calendar of Events
- 14 Wineries
- 16 Dining
- 20 Golf Courses



### ACADEMY OF MANAGED CARE PHARMACY (AMCP)

#### PUBLISHER/ADVERTISING OFFICE

American Medical Communications, LLC (AMC)  
630 Madison Avenue, 2nd Floor  
Manalapan, NJ 07726  
Tel 732-490-5530 | eFax 732-862-1108

#### EDITORIAL SUPPORT/IMAGES

[bostonusa.com](http://bostonusa.com)

#### ART DIRECTION AND LAYOUT

##### Ari Mihos

732-490-5530 | [amihos@americanmedicalcomm.com](mailto:amihos@americanmedicalcomm.com)

##### Charlene DePrizio

732-406-4096 | [cdeprizio@americanmedicalcomm.com](mailto:cdeprizio@americanmedicalcomm.com)

#### NATIONAL ACCOUNT EXECUTIVE

##### Maria Sercia

908-216-1548 | [msercia@americanmedicalcomm.com](mailto:msercia@americanmedicalcomm.com)



630 Madison Ave., 2nd Floor  
Manalapan, NJ 07726  
732-490-5530

Editorial content for the AMCP Managed Care & Specialty Pharmacy Annual Meeting 2018 City Guide was provided by American Medical Communications, LLC (AMC). Copyright 2018 AMC. All rights reserved. No part of this publication may be reproduced or transmitted in any form, by any means, without prior written permission of the Publisher. The statements and opinions contained in the articles in this publication are solely those of the authors thereof and not of the publisher. AMC will not assume responsibility for damages, loss, or claims of any kind arising from or related to the information referred to in articles or advertisements contained in this publication, including any claims related to the products, drugs, or services mentioned herein.

AMC claims no ownership of any trademarked, registered, copyrighted, or other intellectual property mentioned in this document. All such rights remain with parent companies, whether noted or not. AMC has made a good-faith effort to honor applicable Terms of Use.

## Welcome!

The Academy of Managed Care Pharmacy (AMCP) welcomes you to Boston and the AMCP Managed Care Specialty Pharmacy Annual Meeting 2018. AMCP is the leading national organization serving pharmacists, health care professionals, and others involved in providing essential pharmacy services to the more than 270 million Americans covered by a managed care pharmacy benefit.

This year's Annual Meeting features a wide range of topics and learning opportunities designed along five program tracks:

- Business Trends and the Quest for Value
- Succeeding in Specialty Management
- Practical Research that Identifies and Illuminates
- Spotlight on Formulary Management
- Keeping Up With Legislative and Regulatory Matters
- Perspectives in Managed Care Pharmacy

The city of Boston provides an ideal backdrop for Annual Meeting attendees to learn, network, and socialize. The city is filled with a rich blend of historical sites and forward-thinking energy. It also has one of the most walkable downtowns in the United States. The Boston Convention and Exhibition Center is located on Boston's waterfront, just minutes from thousands of hotel rooms, and the best of Boston's restaurants, city sights, and landmarks.

To assist you in planning these experiences, this City Guide presents information on arts and culture, sightseeing, dining, and relaxation. We hope you enjoy the conference and this wonderful host city.

Thank you for joining us at the AMCP Annual Meeting.

Academy of Managed Care Pharmacy





## Did You **KNOW**?

Boston is called “Bean Town” for a reason! The city is famous for its baked beans; the original recipe used centuries ago called for molasses and salt pork.

# WELCOME TO BOSTON

*A Revolutionary City*



**B**ean Town. The Hub of the Universe. Or, as most people know it, the city of Boston. This New England college town is well known for its bustling city life, prestigious schooling, and intricate history—and it continues to be a destination that millions of people visit and enjoy every year.

### **Boston's Revolutionary Beginnings**

Boston has a deep-seated place in the United States' history, since the puritans arrived in 1630 and founded the Massachusetts Bay Colony. Boston, a perfect port town, became a famous hub for traded goods like tea, sugar, fish, and tobacco. This eventually became an issue with the British Empire, and as trade continued to grow (and Britain's East India Company depreciated), Britain started to transfer its own debts to the founded colonies—this did not go over well in Boston.

The city was home to some of the most revolutionary people in U.S. history, including Sam Adams, John Hancock, John Adams, George Washington, and Paul Revere. These men initiated movements that transcended class lines and caused a political uproar against the British. Throughout this revolution, events etched forever in history include the Boston Massacre and Boston Tea Party, as well as the eventual Battle of Bunker Hill in 1775—the early stages of the American Revolutionary War.

Once the 13 American colonies earned their own independence in 1776, global trade grew, new clipper ships were being used for trade and travel, and textile manufacturing continued. The city of Boston was growing in other ways as well—it had a vibrant African-American community, and Beacon Hill was home to the first African-American church, meeting house, and school.

During the mid- to late-19th century, many changes came through Boston, including the arrival of Irish immigrants during

the Potato Famine, as well as immigrants from Italy, Germany, and Poland later in the century.

In the 1980s and 1990s, the city of Boston focused on revitalization, and today, it continues to offer refreshing and innovative recreation for residents and visitors alike.

### **Good Sport**

Most people know that Boston harbors some of the most die-hard sports fans ever, from baseball and basketball, to football and hockey.

The Boston Red Sox, who call Fenway Park home, suffered from the superstition called the “Curse of the Bambino” until 2004; the team finally won the World Series after 86 painstaking years.

If football is more of your interest, look no further than the New England Patriots, one of the most successful teams in NFL history. The Patriots, which call Gillette Stadium home, are known for winning 20 AFL/AFC East titles, appearing at nine Super Bowls, and winning five rings.

Boston (specifically TD Garden arena) is also home to the Boston Celtics, one of the most popular and oldest basketball teams, which has 17 championships and provides homage to the many Irish immigrants who entered Boston and revitalized its population two centuries ago.

Along with the Boston Celtics, TD Garden is also home to the Boston Bruins hockey team. The “Big, Bad Bruins” currently have six Stanley Cup championship banners and, founded in 1924, is one of the “original six” teams in the National Hockey League.

### **From Harvard to the Harbor**

Boston isn't called “America's Walking City” for nothing, but there are many ways to get around in a pinch using public transportation. If you need subway, bus, trolley car, or boat service, look no further than Boston's public transportation system, operated by the Massachusetts Bay Transportation Authority. This system, known to locals as the “T,” helps you get to everywhere in the Greater Boston area using color-coded stops. To ride the “T,” you need to purchase a CharlieCard (or CharlieTicket). These can be purchased at every subway station at vending machines and select convenience stores, and children 11 years of age and younger ride free. Learn more about prices and schedules at [mbta.com](http://mbta.com).

If you're looking to visit the outlying Boston suburbs, Boston's Commuter Rail might be the way to go. Service is available from several “T” stations, but most departures take place at South Station, North Station, or Back Bay Station. Learn more about prices and schedules at [mbta.com](http://mbta.com).

Buses are also available throughout Massachusetts and Boston. All intercity and interstate buses depart from South Station, and ticket counters are located on the third level of the Transportation Center. For information, call the South Station Bus Terminal at 617.737.8040.

If you'd rather take more of a scenic route, Boston's Hubway is available—this bike-sharing system has more than 100 stations and 1,000 bikes available in Boston, Brookline, Cambridge, and Somerville. Learn more about prices and the system at [thehubway.com](http://thehubway.com).

### **Want More?**

For more ideas about things to do in Boston, visit [bostonusa.org](http://bostonusa.org). \*



## Did You KNOW?

Many celebrities call the city of Boston their hometown. Just a few famous New England names include actor Mark Wahlberg, actress Uma Thurman, musician James Taylor, journalist Barbara Walters, and actor Matt Damon.

# TOURING BOSTON

*By Land and Sea*



**B**oston is one of the most historical cities in the United States, so it only makes sense for it to have every type of tour imaginable. From trolley tours and food tours, to history and beer tours, the city of Boston is sure to have something to delight each of its visitors.

### Boston Crawling

Daily, times vary.

\$59.99 for tour with four beers included; \$34.99 for tour only (must be 21 or older to attend).

Tours run approximately 2 hours.

Ranked No. One on TripAdvisor for Boston Nightlife, this pub crawl combines hidden history, cold drinks, and good times into a fun and unique Boston experience. You'll visit pubs and drink local craft beer with fellow travelers from around the globe, while guides share the details of our nation's past that you might not remember from your grade school days.

[bostoncrawling.com](http://bostoncrawling.com)

### Boston Segway Tours

Daily, times vary.

Prices vary based on length of tour.

Tours run approximately 1 or 2 hours.

Why walk when you can Segway?

Whether you're local or from outside of Boston, this is a great combination of learning and fun, for kids and adults alike.

[bostonsegwaytoursinc.com](http://bostonsegwaytoursinc.com)

### Boston Brew Tours LLC

Monday through Saturday, times vary.

\$99 per person.

Tours run approximately 5 hours.

Boston is well known for its lagers and eats, and this tour provides an opportunity to experience some of the best that the city has to offer. Every tour includes 12 or more different craft beers, a lunch and beer tasting, entrance fees to all the breweries, and round-trip transportation.

[citybrewtours.com](http://citybrewtours.com)

### Boston Duck Tours

Tours depart daily from the Museum of Science & Prudential Center from 9

a.m. until an hour before sunset.

Prices vary (rates do not include a 5% convention center surcharge).

Tours run approximately 80 minutes.

A fan favorite of Bostonians and visitors alike, The Boston Duck Tours provide a scenic and unique look at the city and surrounding area. Hop aboard Boston Duck Tours and enjoy a fully narrated, historic tour of Boston in a "DUCK"—a World War II-style amphibious landing craft that travels on land and water. You'll cruise by all the places that make Boston the birthplace of freedom and a city of firsts. Visitors will enjoy the beautiful view of the Boston and Cambridge skylines.

[bostonducktours.com](http://bostonducktours.com)

### Boston Town Crier - Tours of Freedom Trail

Walking tours occur daily at 9:30

a.m. and 3:30 p.m., with additional 12:30 p.m. tours during the week.

Adult tickets \$14; senior/student/military tickets \$12; child tickets (under 12 years old) \$8; and children under 7 years can join for free.

Tours run approximately 90 minutes.

If you're staying in Boston, you definitely want to get a tour of the city's history. Guides wear historically accurate period dress and explain the significance of 11 historic sites in the richest, most densely historic part of Boston. Highlights include a graveyard where Paul Revere and Sam Adams are buried and the unbelievable story of the Boston Massacre at the site where it occurred.

[bostontowncrier.com](http://bostontowncrier.com)

### Boston Red Sox Fenway Park Tours

Tours take place hourly between 9 a.m. and 5 p.m. Please note that on game days, the last tour leaves 3

hours prior to game time.

Adult tickets \$18; seniors (60 years and older) \$17; and children 3 to 15 years \$12.

Tours are approximately 1 hour; guests should arrive 15 minutes before the tour.

If you're a Red Sox fan, or even just a baseball fan, you'll most likely love this tour of sports history. Experienced tour guides provide a thrilling walking tour of Fenway Park.

[mlb.com/redsox/ballpark/tours](http://mlb.com/redsox/ballpark/tours)

### Old Town Trolley Tours of Boston

Tours occur daily between 9 a.m. and 5 p.m.

Prices vary, see website for online offers and exclusive details.

Tours are approximately 1.5 hours.

Enjoy a fully narrated sightseeing tour aboard an authentic, all-weather trolley. Daily departures leave at least every 20 minutes from 18 stops throughout the city, including the New England Aquarium, U.S.S. Constitution Museum, the Trolley Stop Store on the corner of South Charles and Boylston Streets, and most major hotels. Old Town Trolley has expanded its tour route and now stops at the Seaport District and legendary Fenway Park.

[trolleytours.com](http://trolleytours.com)

### Yummy Walks

Times and dates vary.

Tours are available based on preference of area and food, and prices vary.

Tours are approximately 3 hours.

After a long and busy day, a fun food tour may be something to consider. Yummy Walks offers fun and delicious walking, food tasting, and discovery tours. The tour highlights "Mom and Pop" establishments that locals frequent, as well as iconic eateries. Besides the great food, guests can learn about the history, culture, architecture, and entertainment of a specific neighborhood.

[foodtoursboston.com](http://foodtoursboston.com) \*





# BOSTON BITES

*and Nightlife*

If you have some downtime, relaxing and having fun with colleagues can be the best ending to a long but educational day. If you're looking for laughs, or to have a few pints with some friends, Boston has a few options that are close by during your stay.

### Kings Dining and Entertainment Boston – Seaport

This award-winning dining and entertainment venue has the best of everything—food, drinks, and social gaming. Inside, you'll enjoy upscale, retro-inspired décor and great service while sampling creative cocktails and partaking in a game of bowling. Looking for something a bit more "8-bit?" Kings also features many coin-operated games that you'll remember fondly, including NBA Jam, Mortal Kombat, The Simpsons, Asteroids, Mario Bros., and more. If you feel like grazing, Kings has various options for appetizers and dinner, including Korean fried cauliflower, fried mac & cheese bites, roasted beet & organic farro salad, and Nashville hot chicken, just to start.

60 SEAPORT BOULEVARD  
SUITE 225  
BOSTON, MA 02210  
617.401.0025  
[kings-de.com/seaport](http://kings-de.com/seaport)

### Laugh Boston

Who's ready to laugh? This up-scale comedy club is steps from the Boston Convention and Exposition Center, so if you're looking to get silly after the conference, you certainly don't have to travel far! Laugh Boston's weekly acts feature headliners from New York City and Los Angeles, as well as the best comedians working in Boston. Laugh Boston can seat up to 300 people and features a full bar, as well as state-of-the-art audio visual. If all the laughing conjures up an appetite, Laugh Boston has many bar favorites for you, including queso fries, chicken

wings, salads, sandwiches, and desserts. Specialty cocktails like "The Heckler" are also available.

425 SUMMER STREET  
BOSTON, MA 02210  
617.263.1300  
[laughboston.com](http://laughboston.com)

### The Grand

Sometimes you just need to dance, namely in a place where Old Hollywood glamour meets modern technology. This luxury nightclub features a lustrous dance floor, bar areas, and stadium VIP seating. This venue even provides private spaces equipped with phone charging stations and WiFi.

58 SEAPORT BOULEVARD  
SUITE 300  
BOSTON, MA 02210  
617.262.3908  
[thegrandboston.com](http://thegrandboston.com)

### Good Life

Less than a mile away from the Boston Convention and Exposition Center, Good Life resides in the heart of downtown Boston and is a full restaurant and nightclub. If you're looking to eat first, this restaurant provides breakfast, lunch, and dinner. Good Life boasts two floors, local artwork, live music, and DJs from across the country.

28 KINGSTON STREET  
BOSTON, MA 02111  
617.451.2622  
[goodlifebar.com](http://goodlifebar.com)

### Howl at the Moon – Boston

If you're looking for a restaurant that also specializes in dueling pianos, look no further than Howl at the Moon. The rock 'n' roll dueling piano show occurs seven nights a week and provides a unique after-

hours outing. You'll hear hits from artists like Billy Joel, Lady Gaga, Taylor Swift, the Beastie Boys, and everything in between.

184 HIGH STREET  
BOSTON, MA 02110  
617.292.4695  
[howlatthemoon.com/boston](http://howlatthemoon.com/boston)

### Top of the Hub Restaurant & Skywalk

If you're looking for some more scenery, a quick 20-minute drive brings you to Top of the Hub Restaurant & Skywalk to experience "New England's best view." Fifty-two floors above the Back Bay, the menu of this eatery focuses on the seafood, such as local oysters. When nighttime comes, you can enjoy a cocktail in the lounge and listen to live music every night at 7:30 p.m.

800 BOYLSTON STREET  
BOSTON, MA 02199  
617.536.1775  
[topofthehub.net](http://topofthehub.net)

### Whisky Saigon

Working with industry professionals, the Whisky Saigon has created an innovative and exciting new club experience in the city. Special effects and an amazing sound system will keep you dancing throughout the night.

116 BOYLSTON STREET  
BOSTON, MA 02116  
617.437.0044  
[whiskysaigon.com](http://whiskysaigon.com) \*

## Did You Know?

The city of Boston is named after a town that already existed in England. The original town of Boston is located in Lincolnshire, on the east coast of England. Both cities share at least one similarity—their residents are both called "Bostonians."



## Did You KNOW?

Fenway Park is an extremely important landmark to Boston's die-hard baseball fans. Although Fenway's famous "Green Monster" (also called "The Wall") wasn't painted green until 1947, the unique color is actually called "Fenway Green," and has a patent, which is held by the Boston Red Sox.



# CALENDAR

*of Events*



The following are some special events taking place during your stay in Boston.

## Moonbox Productions Presents the Tony Award-Winning Musical, *Cabaret*

April 26 at 7:30 p.m.

Tickets start at \$60.

For a jazzy and fun evening, look no further than Moonbox Productions and its presentation of the hit Tony Award-winning musical, *Cabaret*. Set in 1930s Germany during the rise of the Nazis, this musical provides a provocative and sultry look at the Kit Kat Klub and its patrons that continue to visit, only to escape the deteriorating world outside.

BOSTON CENTER FOR THE ARTS CALDERWOOD PAVILION  
539 TREMONT STREET  
BOSTON, MA 02116

617.933.8600

[bostontheatrescene.com/season/Cabaret](http://bostontheatrescene.com/season/Cabaret)

## Boston Symphony Orchestra

April 24–26 at 8:00 p.m.

Ticket prices vary.

The Boston Symphony Orchestra is the largest orchestral organization in the world. Founded in 1881, it is home to the Boston Symphony Orchestra musicians, the Tanglewood Festival Chorus, and the Boston Symphony Chamber Players. On April 24, Tugan Sokhiev conducts Britten, Chopin and Mendelssohn (featuring pianist Jan Lisiecki); on April 25, Celebrity

Series of Boston Presents the Los Angeles Philharmonic, with Gustavo Dudamel as the conductor; and on April 26, Tugan Sokhiev conducts Brahms and Prokofiev (featuring violinist Vadim Gluzman).  
301 MASSACHUSETTS AVENUE  
SYMPHONY HALL  
BOSTON, MA 02115  
888.266.1200  
[bso.org](http://bso.org)

## A Mirror Maze: Numbers in Nature

Open daily through April 25.

Tickets for the Museum of Science are \$20—this exhibit is free with price of admission.

Learning can be interesting and fun, as the Museum of Science in Boston proves. In “A Mirror Maze: Numbers in Nature,” fans big and small can navigate a mirror maze and discover numerical patterns that exist in the natural world. Fractal branching, spirals, Voronoi patterns, the golden ratio, and more will be revealed, and the experience will leave you appreciating the beauty of the world through numbers.

MUSEUM OF SCIENCE  
1 SCIENCE PARK  
BOSTON, MA 02114  
617.723.2500

[mos.org/exhibits/mirror-maze](http://mos.org/exhibits/mirror-maze)

## Boston Red Sox vs. Tampa Bay Rays

April 27 at 7:10 p.m.

Ticket prices vary.

If you’re extending your stay at the meeting, why not take it easy and enjoy a baseball game? Root for the Boston Red Sox as they take on the Tampa Bay Rays at Fenway Park.

FENWAY PARK  
4 YAWKEY WAY  
BOSTON, MA 02215  
877.733.7699

[mlb.com/redsox/schedule/2018-04](http://mlb.com/redsox/schedule/2018-04)

## Black and White Japanese Modern Art

Open daily through June 3.

Tickets start at \$23.

For a look into the monochrome aesthetic, shared widely in Japan and beyond during the postwar period, this calligraphy collection by Inoue Yūichi (1916–1985) provides a beautiful and haunting look at pieces that continue to remain influential to this day.

MUSEUM OF FINE ARTS,  
BOSTON  
465 HUNTINGTON AVENUE  
BOSTON, MA 02115  
617.267.9300

[mfa.org](http://mfa.org)

## Blue Man Group

April 25–26 at 7:30 p.m.

Ticket prices vary.

As the show states in its promotions, “dare to live in full color.” This eclectic show has been growing in popularity for years and continues to present an innovative look at music and entertainment. During the show, watch as bald, blue men take you on a spectacular journey bursting with music, laughter, and a surprise or two.

CHARLES PLAYHOUSE  
74 WARRENTON STREET  
BOSTON, MA 02116  
800.258.3626

[blueman.com/boston/about-show](http://blueman.com/boston/about-show)

## Inventur—Art in Germany, 1943–55

April 23–26, 10:00 a.m. – 5:00 p.m.

Tickets start at \$15.

The first exhibition of its kind, *Inventur* examines the highly charged artistic landscape in Germany from the mid-1940s to mid-1950s. This exhibition has a focus on modern art during a time of pain and destruction, as the Germans were dealing with numerous defeats. *Inventur* includes more than 160 works, encompassing nearly 50 artists—many of the works which have never been on view outside Germany.

HARVARD ART MUSEUMS  
32 QUINCY STREET  
CAMBRIDGE, MA 02138  
617.495.9400

[harvardartmuseums.org](http://harvardartmuseums.org)

## Joseph (Trio)

April 23 at 7:00 p.m.

Ticket prices range from \$20 to \$25.

This American folk trio is made up of sisters Allison, Meegan, and Natalie Clossner. Their second and most recent album, “I’m Alone, No You’re Not,” was released in July 2016, and debuted at No. 1 on Billboard’s Heat-seekers chart.

CITY WINERY BOSTON  
80 BEVERLY AT ONE CANAL  
BOSTON, MA 02114

[citywinery.com/boston](http://citywinery.com/boston) \*



## Did You KNOW?

Boston knows how to bring in the fans! In 2017, more than 18 million people visited Boston.

# NOT JUST PINTS

*Wineries Around Boston*



**B**oston might have a deep connection to Irish fare and drink, but the city has more than pints of lager to offer. The coastal region of Massachusetts has become a popular area for grapevines, because of the excellent climate. Here are some wineries that are located in or around Boston that you can visit during your stay.

### Boston Winery

If you want to know the ins and outs of wine making, Boston Winery's goal is to make the entire process as transparent as possible. Sorting, crushing, pressing, aging, racking, filtering, bottling—it's all covered here. The winery was started by Ralph Bruno and its focus is creating craft wines that are entirely produced by hand, from harvest to bottle. Tours and tastings are available Thursday to Saturday from 1 p.m. to 5 p.m., starting every hour. Space is limited, and reservations are recommended. Located approximately 30 minutes away.

26 ERICSSON STREET  
BOSTON, MA 02122  
617.265.9463  
[bostonwinery.com](http://bostonwinery.com)

### City Winery

Food, wine, and music—do you need much more? This wine bar serves Mediterranean dishes and also features an onsite winery, retail shop, and acclaimed live music space. Located in downtown Boston.

80 BEVERLY STREET  
BOSTON, MA 02114  
617.933.8047  
[citywinery.com/boston](http://citywinery.com/boston)

### Nashoba Valley Winery

Less than an hour from the Boston Convention and Exhibition Center, Nashoba Valley Winery is located in the heart of Massachusetts' apple country and provides breathtaking views of the town of Bolton. The winery, which first started producing wines in 1978, has become a premier destination for visitors looking for wine, great food, and a stunning atmosphere. Nashoba Valley Winery takes wines seriously—it has won more than 100 national and international medals, as well as accolades from noteworthy publications such as *Boston Magazine*, *Wine Enthusiast*, *Cooking Light*, *Food & Wine*, *The Yankee Magazine's* 2014 Editors' Choice, and *Community Newspaper Company* 2004 Readers Choice Award.

100 WATTAQUADOCK HILL ROAD  
BOLTON, MA 01740  
978.779.5521  
[nashobawinery.com](http://nashobawinery.com)

### Turtle Creek Winery

This winery might be small, but that is how the staff wants to keep it. According to the winery's website, they currently

produce about 1200 cases per year and do not plan on getting any larger. The winery has won numerous awards for their wines, including its dry Riesling and Cabernet Franc. Reservations are required for tours and tastings and it is located about 30 minutes from the Boston Convention and Exposition Center.

28 BEAVER POND ROAD  
LINCOLN, MA 01773  
781.259.9976  
[turtlecreekwine.com](http://turtlecreekwine.com)

### Running Brook Vineyard & Winery

Located about an hour from the Boston Convention and Exposition Center and founded in 1998 by Pedro Teixeira and Manuel Morais, Running Brook Vineyard & Winery was created to produce top-quality wines that would make New Englanders proud. The winery tasting room is open seven days a week, year-round (barring any poor weather conditions). If you want to try something different, the winery also has a distillery; its Black Sheep Brandy is made with a proprietary blend of 100% grapes straight from Running Brook's vineyards.

335 OLD FALL RIVER ROAD  
NORTH DARTMOUTH, MA 02747  
508.985.1998  
[runningbrookwine.com](http://runningbrookwine.com)

### Mill River Winery

Opened in July 2011, Mill River Winery had a mission of produc-

ing handcrafted wines using the finest grapes from Massachusetts and other notable wine regions. Located about 45 minutes from the Boston Convention and Exposition Center, the winery was renovated from Dodge's Cider Mill, with history dating back to the mid-1900s. If you'd like to talk and taste, the winery has a tasting room and gift shop, so you can purchase some of your favorites. If you want to enjoy a more natural view, visitors are welcome to stroll through the vineyard and enjoy a relaxing afternoon.

498 NEWBURYPORT TURNPIKE  
ROWLEY, MA 01969  
978.432.1280  
[millriverwines.com](http://millriverwines.com)

### Plymouth Bay Winery

At this winery, the slogan is "play with Bay!" With a focus on fun and creativity, Plymouth Bay Winery avoids stuffiness and wants to focus on their visitors having a good time and is located approximately 45 minutes away from the Boston Convention and Exposition Center. But don't think the wine quality suffers—the collection of wines is produced from locally grown, native grapes and berries and is made to accompany various types of cuisine.

114 WATER STREET  
PLYMOUTH, MA 02360  
508.746.2100  
[plymouthbaywinery.com](http://plymouthbaywinery.com) \*



## Did You **KNOW**?

According to information on Massachusetts' Secretary of the Commonwealth website, the famous Boston Cream Pie was chosen as the official Commonwealth dessert on December 12, 1996.



# DINING IN BOSTON

*A New England Necessity*

**B**oston's various cultural influences have led to an exciting array of dining choices. From pub food and Italian fare to the fresh seafood options from Boston's beautiful harbor, seasonal and local fare are

worked into the many dishes.

Here, we provide a listing of restaurants to try in Boston, many of which are nearby or a short traveling distance to the Boston Convention and Exhibition Center.

Restaurant	Location	Contact Information	Type of Cuisine	Brief Description of Restaurant
Amrheins	80 West Broadway Boston, MA 02127	617.268.6189 <i>amrheinsboston.com</i>	American and Italian	Since 1890, Amrheins has been serving locals and visitors with favorites like pizza, Tuscan pork chops, and more.
Bastille Kitchen	49 Melcher Street Boston, MA 02210	617.556.8000 <i>bastillekitchen.net</i>	French	Upscale and romantic, this contemporary fine dining bistro offers both modern and traditional cuisine like burgundy escargot, steak frites, and duck l'orange to please even the most varied palate.
Blue Dragon	324 A Street Boston, MA 02210	617-338-8585 <i>bluedragonbos.com</i>	Asian	Noted chef Ming Tsai and his staff serve up tapas-style dishes with an "East meets West" quality.
Coppersmith	40 West 3rd Street South Boston, MA 02127	617.658.3452 <i>coppersmithboston.com</i>	Gastropub	This is a unique eatery, providing comfort food in a vintage-industrial warehouse.
Empire	1 Marina Park Drive Boston, MA 02210	617.295.0001 <i>empireboston.com</i>	Pan-Asian	This trendy club-like complex opens in the evening and provides classic Asian favorites in a modern restaurant and lounge.
Flour Bakery + Cafe	12 Farnsworth Street Boston, MA 02210	617.338.4333 <i>flourbakery.com</i>	American	If you're looking for something quick, savory, or sweet, this café provides it all. Gluten-free desserts and salad options are also available.
Harpoon Brewery	306 Northern Avenue Boston, MA 02210	617.456.2322 <i>harpoonbrewery.com/ breweries/boston</i>	Brewery/ Pub	If you're looking for a beer and a small bite, this brewery provides tours, a full selection of Harpoon beers straight from the source, and delicious pub fare like giant pretzels to pair with your pint.
The Hub Pub	18 Province Street Boston, MA 02108	617.227.8952 <i>thehubpub.com</i>	American	Calling itself "the friendliest pub in the Hub!" you can get a true feel of Boston's camaraderie, as well as sample some popular American pub favorites like burgers, chowder, and more.
Legal Test Kitchen	225 Northern Avenue Boston, MA 02210	617.330.7430 <i>legalseafoods.com</i>	Seafood	Part of the Legal Seafood chain, Legal Test Kitchen offers an innovative view on food and drinks and is a great late-night destination to relax after a long day.
Mastro's Ocean Club	25 Fan Pier Boulevard Boston, MA 02210	617.530.1925 <i>mastrosrestaurants.com</i>	Steakhouse	This fine dining restaurant has a beautiful view of the Boston Harbor, as well as an expansive menu of steaks and seafood. Reservations are required.
Menton	354 Congress Street Boston, MA 02210	617.737.0099 <i>mentonboston.com</i>	French	For fine dining, every detail in Menton has been carefully crafted, from the linens and glassware to the seasonal ingredients.
M.J. O'Connor's Irish Pub	425 Summer Street (Located in the Westin Boston Waterfront) Boston, MA 02110	617.443.0800 <i>mjoconnors.com</i>	Irish-American	This eatery calls itself "a Boston pub with an Irish soul," and the menu and beverage options do that statement justice, with choices like the Guinness onion soup, fish and chips, and shepherd's pie.
Montien Thai Restaurant	63 Stuart Street Boston, MA 02116	617.338.5600	Thai	Sushi and traditional Thai favorites are served in an informal setting.
Morton's The Steakhouse	2 Seaport Lane (Located in World Trade Center East) Boston, MA 02210	617.526.0410 <i>mortons.com/ bostonseaport</i>	Steakhouse	This chain's seaport location is a fixture on the city's burgeoning waterfront district.

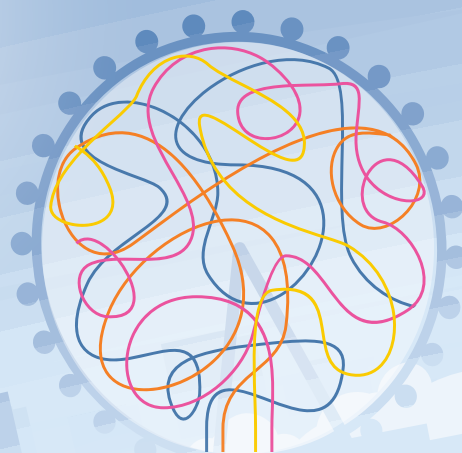


Restaurant	Location	Contact Information	Type of Cuisine	Brief Description of Restaurant
New Jumbo Seafood Restaurant	5 Hudson Street Boston, MA 02111	617.542.2823 <a href="http://newjumboseafoodboston.com">newjumboseafoodboston.com</a>	Asian	For a relaxed and comfortable dining experience, this restaurant has various traditional Hong Kong dishes—but it is known for its fresh seafood options.
Ocean Prime Boston	140 Seaport Boulevard Boston, MA 02210	617.670.1345 <a href="http://ocean-prime.com">ocean-prime.com</a>	Steakhouse and seafood	Located in the new Pier 4 building in Boston's bustling Seaport District, the menu focuses on seafood, steaks, and handcrafted cocktails.
Post 390	406 Stuart Street Boston, MA 02116	617.399.0015 <a href="http://post390restaurant.com">post390restaurant.com</a>	American	A contemporary twist on a tavern, this restaurant embraces a farm-to-table vibe, surrounded by multiple fireplaces and views of popular Boston landmarks.
Red Lantern Restaurant & Lounge	39 Stanhope Street Boston, MA 02116	617.262.3900 <a href="http://redlanternboston.com">redlanternboston.com</a>	Asian	This sophisticated lounge offers Pan-Asian cuisine, as well as a long list of sake, wines, and specialty cocktails.
Row 34	383 Congress Street Boston, MA 02210	617.553.5900 <a href="http://row34.com">row34.com</a>	Seafood	This trendy restaurant and raw bar has a focus on oysters and beer, but it also boasts some excellent other seafood options.
Sauciety	425 Summer Street (Located in the Westin Boston Waterfront) Boston, MA 02110	617.532.4600 <a href="http://westinbostonwaterfront.com/sauciety">westinbostonwaterfront.com/sauciety</a>	American	If modern American fare is what you are looking for, this restaurant offers seasonally inspired dishes crafted using fresh, local ingredients in a sleek, sophisticated atmosphere.
Shawarma Falafel	26 Province Street Boston, MA 02108	857.265.3017 <a href="http://shawarmafalafel.com">shawarmafalafel.com</a>	Lebanese	For great Lebanese food in a simple setting, this eatery specializes in cultural delights like falafel, shawarma, and rice.
Sportello	348 Congress Street Boston, MA 02210	617.737.1234 <a href="http://sportelloboston.com">sportelloboston.com</a>	Italian	For a taste of Italy, look no further than Sportello. Its trattoria-inspired dishes and handmade pasta will have you saying, "That's amore!"
Temazcal Tequila Cantina	250 Northern Avenue #2 Boston, MA 02210	617.439.3502 <a href="http://temazcaltcantina.com">temazcaltcantina.com</a>	Mexican	For Mexican fine dining, Temazcal features authentic recipes made with fresh, local ingredients—all in a relaxing atmosphere.
Tico	222 Berkeley Street Boston, MA 02116	617.351.0400 <a href="http://ticoboston.com">ticoboston.com</a>	Latin American	This vibrant hot spot boasts an open kitchen where small (and large) plates of Latin-American staples are featured.
Yankee Lobster Fish Market	300 Northern Avenue Boston, MA 02210	617.345.9799 <a href="http://yankeelobstercompany.com">yankeelobstercompany.com</a>	Seafood	This eatery has a relaxed atmosphere and serves delectable ocean eats like lobster rolls and New England's classic clam chowder. *



# AMCP 2018 NEXUS

OCTOBER 22–25 •  
ORLANDO WORLD CENTER MARRIOTT •  
ORLANDO, FLORIDA •



PREPARING  
FOR THE **next**  
generation  
OF CARE

**REGISTRATION OPENS TUESDAY, JUNE 12, 2018 AT 1:00 PM ET.**

## **Are you prepared for the future of Managed Care Pharmacy?**

- » One where formularies evolve to include wildly different methods of treatment...
- » Where contract negotiations cover more than rebates...
- » Where value, efficiency and data support better patient outcomes...

**A new world of innovation and possibility is on the horizon, and the only way to get ready is together—at AMCP Nexus 2018 in sunny Orlando.** ☀️

[www.amcpmeetings.org](http://www.amcpmeetings.org)

**AMCP** | Academy of  
Managed Care  
Pharmacy®



## Did You KNOW?

The Ted Williams Tunnel, a highway tunnel placed under the Boston Harbor, is 90 feet below the surface, making it the deepest tunnel in North America.

# WHEELIE

*In Boston*

**M**assachusetts is home to a beautiful landscape, which is evident on its various available golf courses throughout the state. A few courses are located within Boston's vast city lines, but many others are located within an hour drive. Here's a look at some of the options for public and resort courses easily accessible from Boston.

### Granite Links Golf Club

Granite Links is an award-winning private membership club that also welcomes public visitors. Located less than 7 miles from downtown Boston in a 450-acre layout, this golf club offers 27 challenging holes, which are superbly maintained and offer a breathtaking view of the Boston Harbor and its skyline. Rated a "Top 100 Greatest Golf Course in America" by *Golf Digest*, it's easy to see why this course is enjoyed by club members and visitors. When your golf day is done, relax and grab a bite at the club's public restaurant, The Tavern at Quarry Hills.

100 QUARRY HILL DRIVE  
QUINCY, MA 02169

### Pinehills Golf Club

This golf course was created to rival other prestigious clubs, while still remaining accessible for daily drop-ins. Pinehills is located in Plymouth, which is just a short drive from Boston and Cape Cod. The course, boasting more than 300 acres, also offers two 18-hole championship courses designed by Rees Jones and Nicklaus Design, a well-established golf course architecture company. If you need a break from golf, or want to unwind after a game, Mirbeau Inn & Spa at The Pinehills provides limitless comfort and relaxation, clustered around the sumptuous Monet pond gardens.

54 CLUBHOUSE DRIVE  
PLYMOUTH, MA 02360

### Fresh Pond Golf Course

Minutes outside of Boston, Fresh Pond's public golf course plays

throughout a corner of Cambridge's Historic Fresh Pond Reservation. This 9-hole course has water hazards coming into play on 4 holes, as well as two par-5s that could prove to be a challenge. If you're in need of golfing gear, Fresh Pond has you covered—the golf shop is a 4-time winner of the New England PGA's "Public Golf Shop of the Year Award."

691 HURON AVENUE  
CAMBRIDGE, MA 02138

### George Wright Golf Course

This course has its own place in history: It opened in 1938 after receiving President Roosevelt's Workers Progress Administration funding to complete the construction. The course is named after Hall of Fame baseball player George Wright, who played for the Cincinnati and Boston Red Stockings in the 1800s. After his retirement from baseball, Wright became involved in the sport of golf and was a champion in the growth of golf in Boston.

George Wright Gold Course was chosen in recent years as *Golf Digest's* "Best Municipal Course in Massachusetts," and selected the 14th "Best Municipal Golf Course" in the United States by *Golfweek* in 2009; it was also selected as a MGA Amateur Qualifying Site in 2009.

420 WEST STREET  
HYDE PARK, MA 02136

### Newton Commonwealth Golf

This course provides a short but challenging golf route that's located only minutes from downtown Boston. The 18-hole public course is open 7 days a week. What

Newton Commonwealth Golf Course doesn't have in length, it makes up for in challenge with narrow fairways, water hazards, and sand bunkers. The 17th hole is arguably the most difficult on the course and requires an accurate drive and a precise approach shot to a tiny green. If you are par on this hole, pat yourself on the back.

212 KENRICK STREET  
NEWTON, MA 02458

### Brookline Golf Course

The course that makes up Brookline is similar to the one originally built in 1933, but it has gone through some transformations due to land acquisitions throughout the years. Updates include drainage and bunker renovations on the par-four 10th hole, bunker renovation on par-five 6th hole, and creek dredging on the par-four 7th and 8th holes. If you're more interested in practicing your swing, Brookline also features a driving range that is normally open from sunrise to sunset.

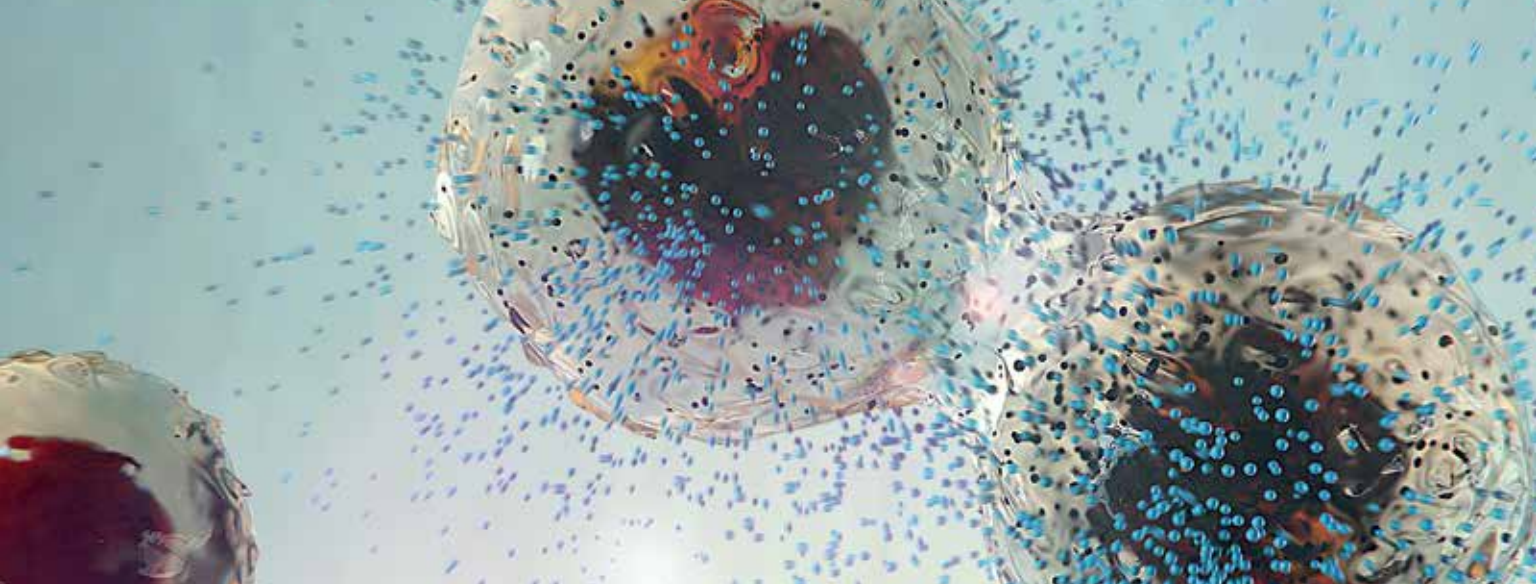
1281 WEST ROXBURY PARKWAY  
CHESTNUT HILL, MA 02467

### Widow's Walk Golf Course

This golf course is a bit of a drive—an hour away from Boston—but it is located on the coast midway between Boston and Plymouth. It is America's first "environmental demonstration course" and has been designated as an Audubon International, Certified Audubon Cooperative Sanctuary. Since Widow's Walk Golf Course is environmentally friendly, visitors can play holes that meander through undisturbed wetlands and truly enjoy the surrounding nature. The 6403-yard, par-72 layout has some challenging holes—being so close to the ocean, the wind can often come into play.

250 DRIFTWAY  
SCITUATE, MA 02066 \*





AstraZeneca 

Innovative medicines.  
Used by millions worldwide.

Learn more at booth

529